








THE LAW

The laws cited below are excerpts from the California Health & Safety Code.

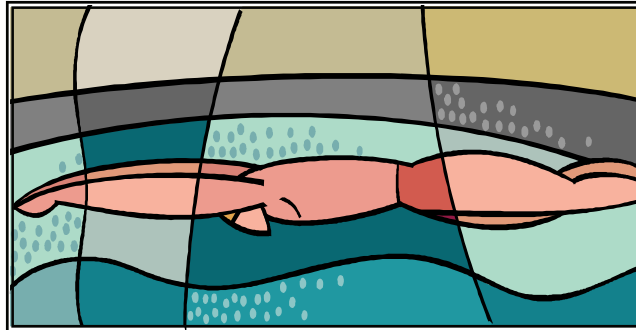
-  Every person operating or maintaining a public swimming pool must do so in a sanitary, healthful and safe manner. (116040)
-  Every pool shall be under the supervision of a person who is fully capable of, and shall assume responsibility for, compliance with all requirements relating to pool operation, maintenance and safety of bathers. (65521)
-  The operator of each pool open for use shall keep a daily record of information regarding operation, including readings of disinfectant residual, pH and maintenance procedures such as cleaning of filters and quantity of chemicals used. (65523a)
-  Data collected...shall be maintained at least one year for inspection by the enforcing agent, or shall be submitted to the enforcing agent upon his request. (65523c)
-  ...any health officer, or any inspector of the state department, may at all reasonable times enter all parts of the premises of a public swimming pool to make examination and investigation to determine the sanitary condition and whether this article, building standards published in the State Building Standards Code relating to swimming pools, or the other rules and regulations adopted by the state department pursuant to this article are being violated. (116055)
-  If, in the opinion of the enforcing agent, a pool is maintained or operated in a manner which creates an unhealthful, unsafe, or unsanitary condition, the pool may be closed by the enforcing agent. Such a pool shall not be reopened until the correction is made, and upon, specific written approval of the enforcing agent. (65545a)
-  Unhealthful, unsafe, or unsanitary conditions include, but are not limited to, the failure to meet clarity, disinfection, pH, safety or bacteriological standards. (65545b)

Stay Connected!

If you are interested in joining our pool safety email list group, go to:

www.sdcdeh.org

Click on the e-mail updates and enter a contact email address. Check the box for "Swimming Pool Safety".



Important Contact Information

(858) 505-6903 Complaint Desk

(858-505-6900 Duty Specialist

(858) 505-6812 Suspect water borne illness

(858) 505-6660 Plan Check

(858) 505-6848 Fax

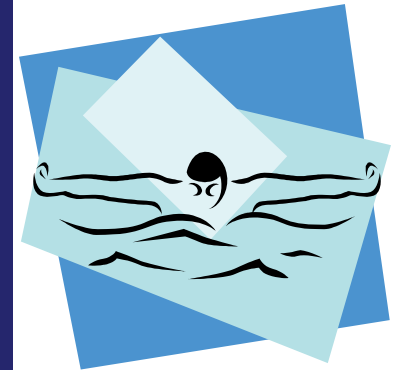
(858) 505-6648 Main Office

E-mail: fhdutyeh@sdcounty.ca.gov

County of San Diego
Food & Housing Division
Department of Environmental Health
P.O. Box 129261, San Diego, CA 92112
(858) 505-6900 (800) 253-9933
www.sdcdeh.org



SWIMMING POOL SAFETY



County of San Diego
Department of
Environmental Health



POOL MAINTENANCE RISK FACTORS

~PREVENTING CONDITIONS THAT CAN LEAD TO ILLNESS OR INJURY~



Drain Covers

Check to make sure that all drain covers are securely installed and are not damaged. If screws are missing, the grate is cracked, or the cover can be moved – **CLOSE** the pool and replace with an ASME approved cover to prevent suction entrapment.



Water Chemistry

Test the water on a daily basis for free chlorine and pH with a DPD test kit and record the results in a log. If the chemical values exceed the limits outside of the approved ranges– **CLOSE** the pool and adjust with the appropriate chemical to prevent bather illness and damage to pool equipment. If chemical adjustments are made document in the pool log.

| Chemical test | Pool or water feature | Spa or wader |
|--|-----------------------|--------------|
| Recommended free chlorine level (ppm) | 2.0 - 4.0 | 3.0 - 5.0 |
| pH | 7.2 - 8.0 | 7.2 - 8.0 |
| Unstabilized free chlorine min-max (ppm) | 1.0 - 10.0 | 1.0 - 10.0 |
| Stabilized free chlorine min-max (ppm) | 1.5 - 10.0 | 1.5 - 10.0 |



Recirculation

Check to see if that the recirculation system is on during all operating hours. If the pumps or filters are found to be in disrepair or the system is not on during the open hours of the pool– **CLOSE** the pool until the system is repaired and running correctly to prevent poor water quality.



Disinfection

Do a daily check to ensure that the automatic chlorinator is functioning correctly and is turned on during the hours of operation. If the chlorinator is turned off, in disrepair, or missing– **CLOSE** the pool until the chlorinator is operating as approved to prevent bather illness.



Pool Enclosure

Test the pool gates every day to ensure that they latch and close on their own. Survey the pool fencing to look for gaps greater than 4 inches and a fence height of at least 5 feet. If the pool gates or fencing are broken– **CLOSE** the pool and secure the area until the issue has been corrected to prevent children drowning.



Water Clarity

Check to see if the main drain cover grates can be seen from the pool deck. If the pool water is not clear enough to see the grates on the main drain cover– **CLOSE** the pool until the water clarity is been corrected to a clean and clear condition to prevent health and safety issues.



Chemical Storage

Look to see if pool chemicals are protected from weather and are in a secure location. Ensure that liquids are not stored near solids and acids are not stored near bases. If these conditions are found to exist– **CLOSE** the pool until corrected to prevent fire or injury to bathers.



General Hazards

Be on the lookout for immediate health hazards to the bathers. If any of the following health hazards are observed– **CLOSE** the pool until the issue has been

Examples: Broken pool light, water temperature above 104°F, no lifesaving equipment, fecal accident, glass in pool, severely damaged pool structure, or any other hazard that could immediately cause danger to the bathers.

Interventions

Record Keeping

Maintaining daily records can help track a pattern of compliance and alert the operator when adjustments need to be made to the pool.

Demonstration of Knowledge

A Certified Pool Operator (CPO) or other pool education class is highly recommended for pool operators. Studies have shown that pool education classes reduce chemical violations.

Maintenance Review

It is essential to maintain the equipment and facilities in good repair. A well taken care of pump room will aid in keeping your pool functioning in a healthy and safe condition.

Operational Review

Maintaining written procedures will help all staff consistently and correctly respond to both daily pool operations and when issues do arise.

Responsible Person (RP)

Each facility needs to have at least one RP who will be responsible for the compliance of all pool operation, maintenance, and the safety of bathers. The contact information for the RP should be made available for contact in case pool issues or emergencies should occur.

