

Bonsall



BONSALL
San Diego County General Plan

Bonsall



Preliminary Staff Recommendations:

- ***Deviations from Referral Map: 10***
 - ***Limited Controversy: 6***
 - ***Elevated Controversy: 4***
- ***11 Disagreements with the Sponsor Group***

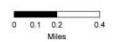
Bonsall Draft Referral Map (With Labels)

Legend

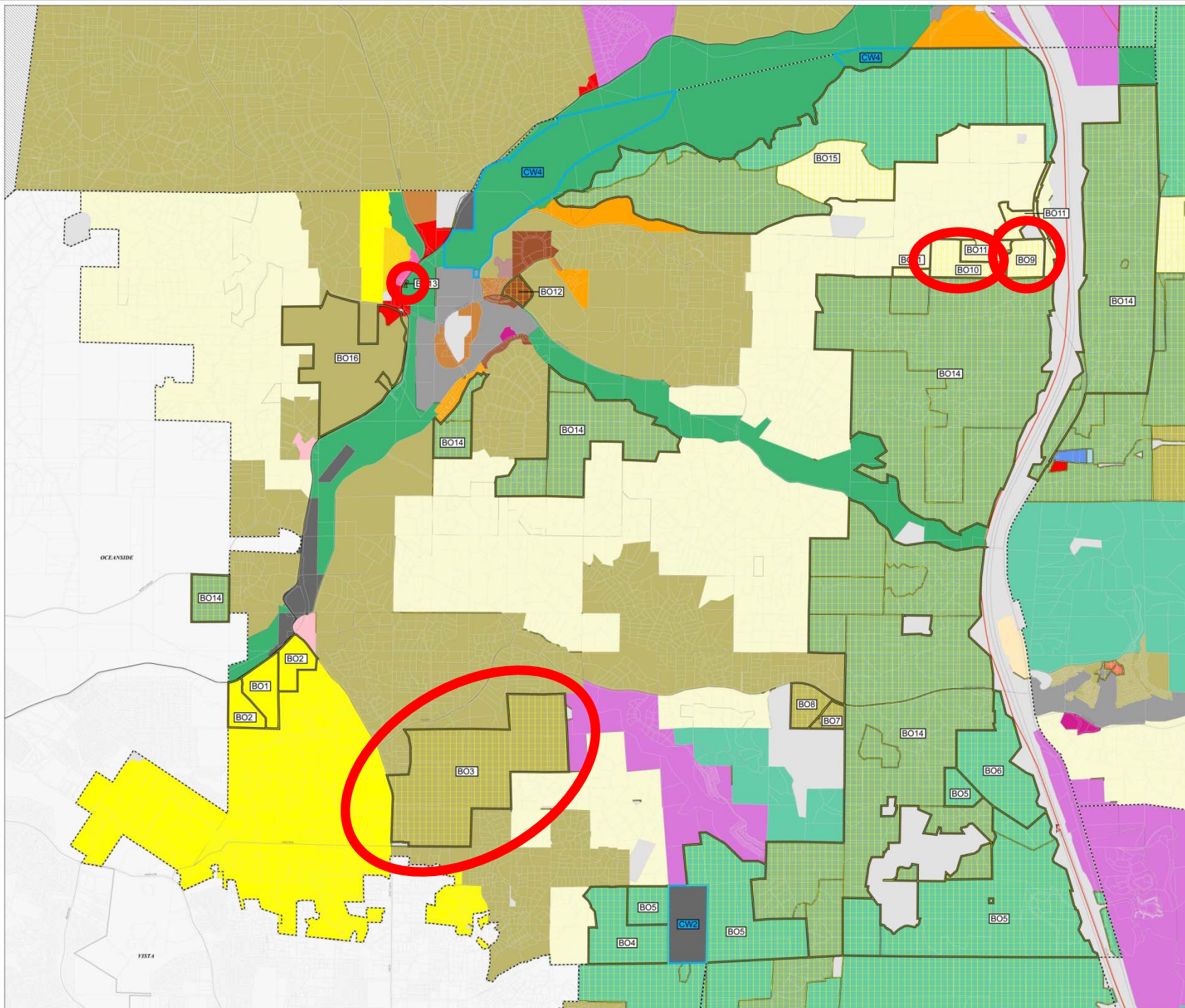
- County Water Authority Boundary
- Areas of Difference
- Forest Conservation Initiative
- Lakes and Reservoirs
- Land Use Designations*
- VILLAGE RESIDENTIAL (VR-30)
- VILLAGE RESIDENTIAL (VR-24)
- VILLAGE RESIDENTIAL (VR-20)
- VILLAGE RESIDENTIAL (VR-15)
- VILLAGE RESIDENTIAL (VR-10-B)
- VILLAGE RESIDENTIAL (VR-7-3)
- VILLAGE RESIDENTIAL (VR-4-3)
- VILLAGE RESIDENTIAL (VR-2-8)
- VILLAGE RESIDENTIAL (VR-2)
- SEM-RURAL RESIDENTIAL (SR-1)
- SEM-RURAL RESIDENTIAL (SR-4)
- SEM-RURAL RESIDENTIAL (SR-10)
- RURAL LANDS (RL-20)
- RURAL LANDS (RL-40)
- RURAL LANDS (RL-50)
- RURAL LANDS (RL-150)
- SPECIFIC PLAN AREA
- OFFICE PROFESSIONAL
- NEIGHBORHOOD COMMERCIAL
- GENERAL COMMERCIAL
- RURAL COMMERCIAL
- LIMITED IMPACT INDUSTRIAL
- MEDIUM IMPACT INDUSTRIAL
- HIGH IMPACT INDUSTRIAL
- VILLAGE CORE MIXED USE
- PUBLIC/SEM-PUBLIC LANDS
- NATIONAL FOREST AND STATE PARKS
- TRIBAL LANDS
- OPEN SPACE (RECREATION)
- OPEN SPACE (CONSERVATION)
- MILITARY INSTALLATIONS
- Jurisdictional Boundary

DATED INFORMATION
Information contained on this map has been or is in the process of being modified and is subject to change.
Current as of November 1, 2009

1:12,140

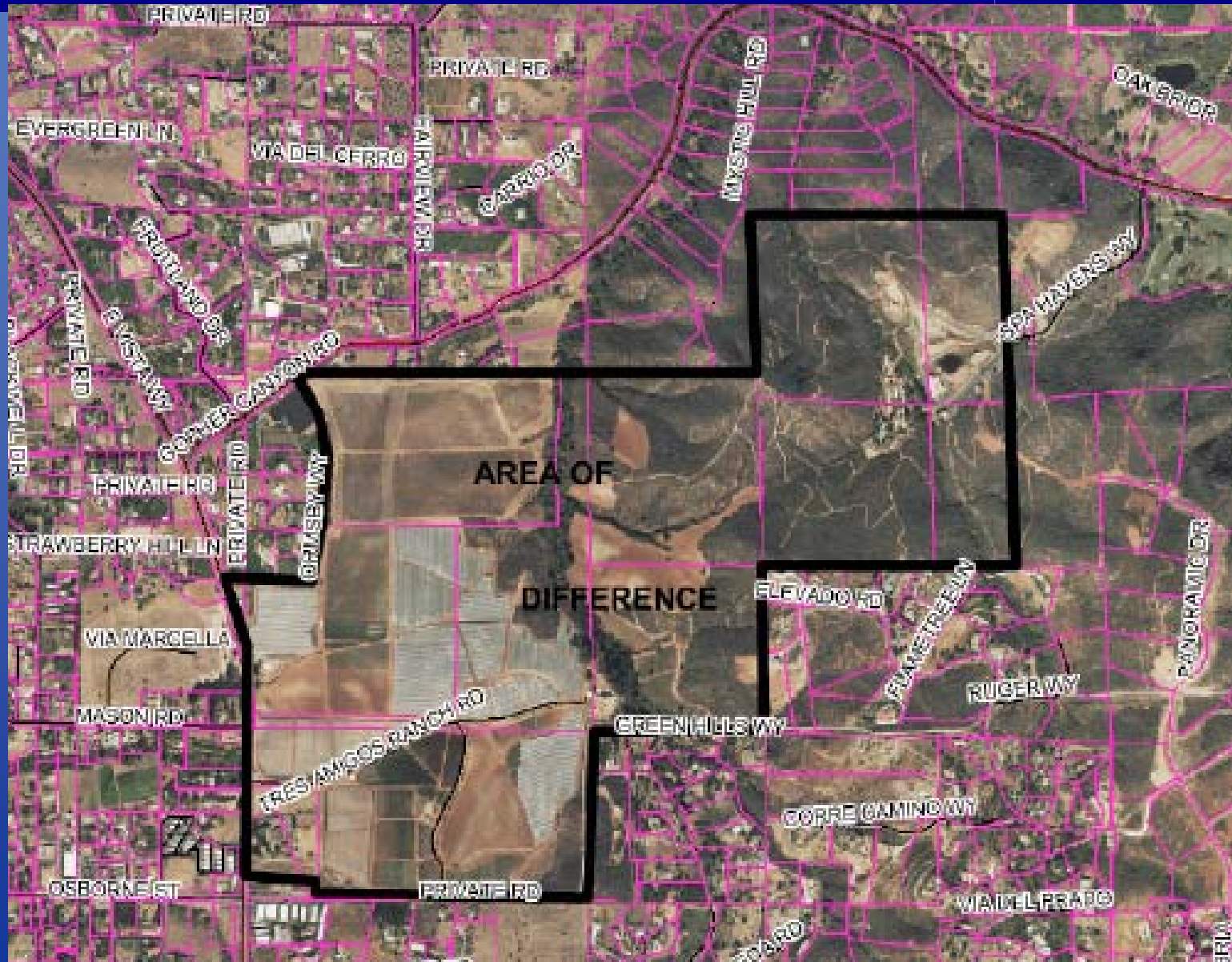


THIS MAP/DATA IS PROVIDED WITHOUT WARRANTY OF ANY KIND, EITHER EXPRESSED OR IMPLIED, INCLUDING BUT NOT LIMITED TO, THE IMPLIED WARRANTIES OF MERCHANTABILITY AND FITNESS FOR A PARTICULAR PURPOSE. Use of the product for purposes other than those intended by the County of San Diego is prohibited. This product may contain information reproduced with permission from the County of San Diego. The map is copyrighted by Rand McNally & Company. It is intended to be used in conjunction with the County of San Diego General Plan. Full text of this legal notice can be found at: <http://www.sandiego.gov/legal/notice.htm>
Date: 05/20/09 File: <http://www.sandiego.gov/legal/notice.htm>
Project: 05/20/09 File: <http://www.sandiego.gov/legal/notice.htm>

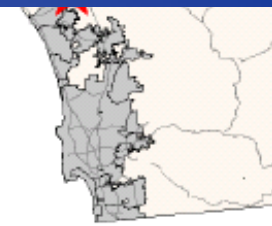
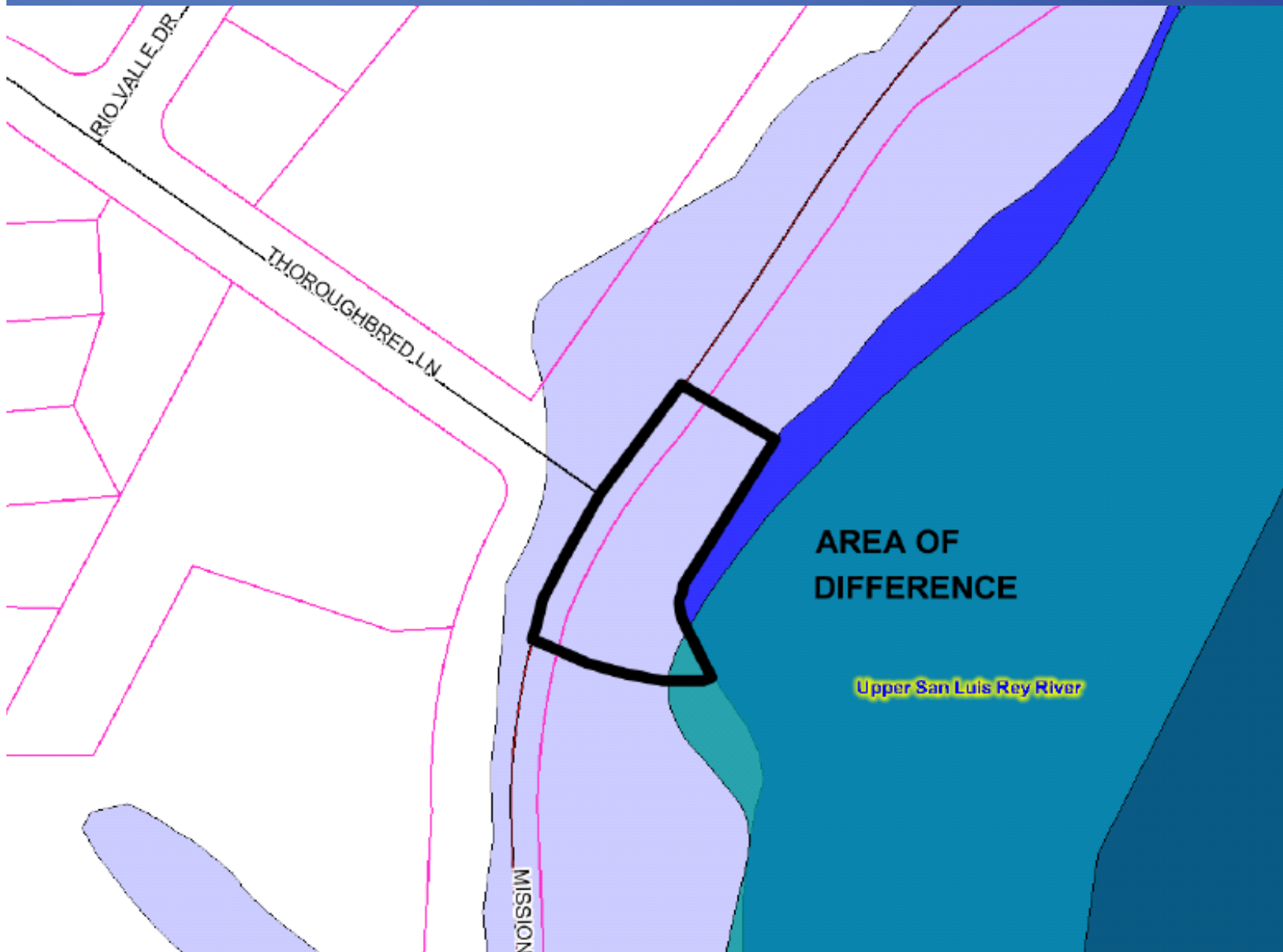


Bonsall [B03]

AERIAL



Bonsall [B013] FLOODPLAIN



- ### Legend
- Parcels with out labels
 - Highways
 - Freeways
 - Streets
 - Water Bodies
 - Water Bodies
 - County Flood Plains
 - Channelized Floodway
 - Flood Way
 - 100 Year Flood Plain
 - FEMA Flood Plains
 - Flood Way
 - 100 Year Flood Plain
 - 500 Year Flood Plain