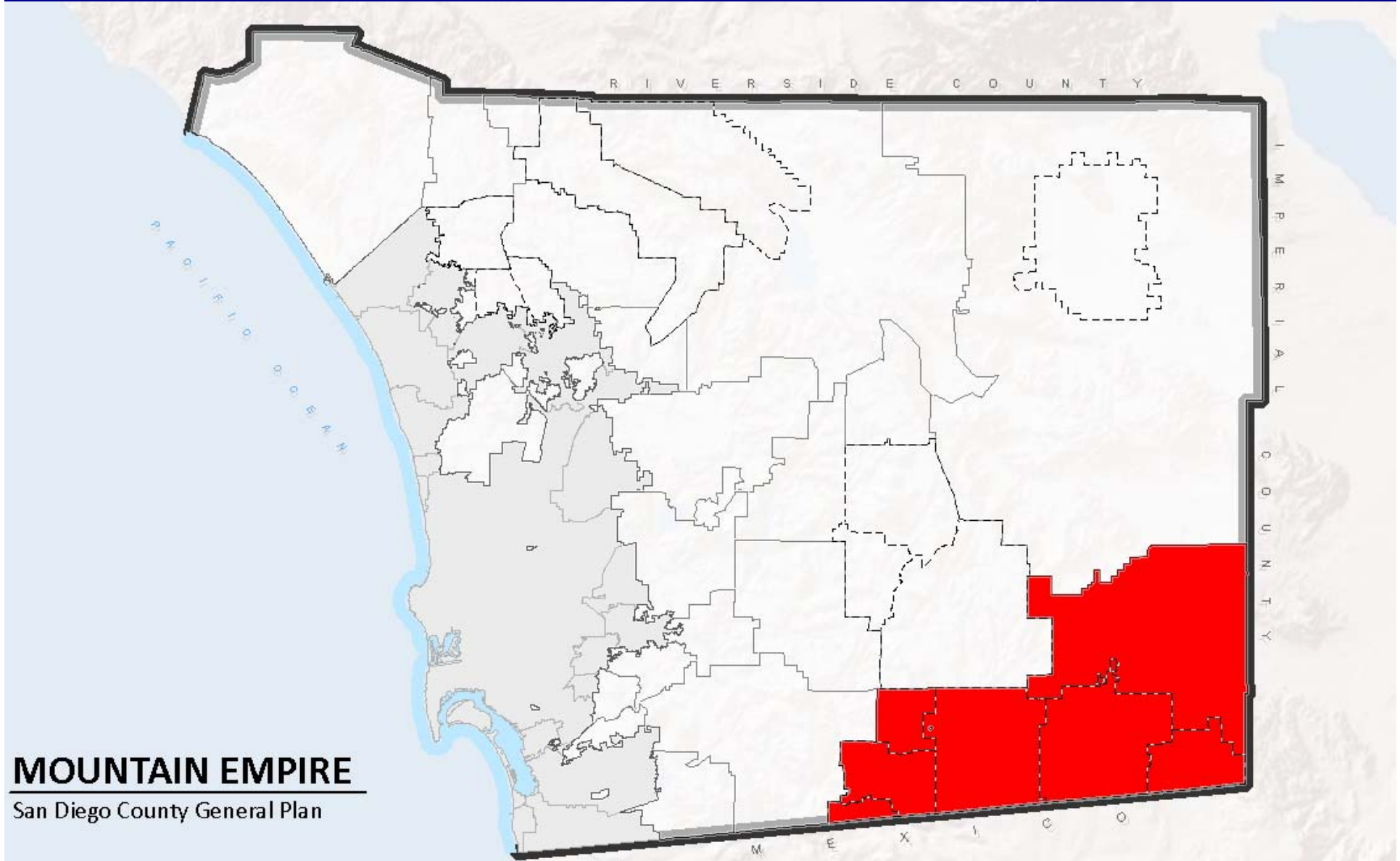


Mountain Empire



MOUNTAIN EMPIRE

San Diego County General Plan

Mountain Empire



Tecate



Mountain Empire



Potrero



Mountain Empire



Boulevard



Mountain Empire



Jacumba



Mountain Empire

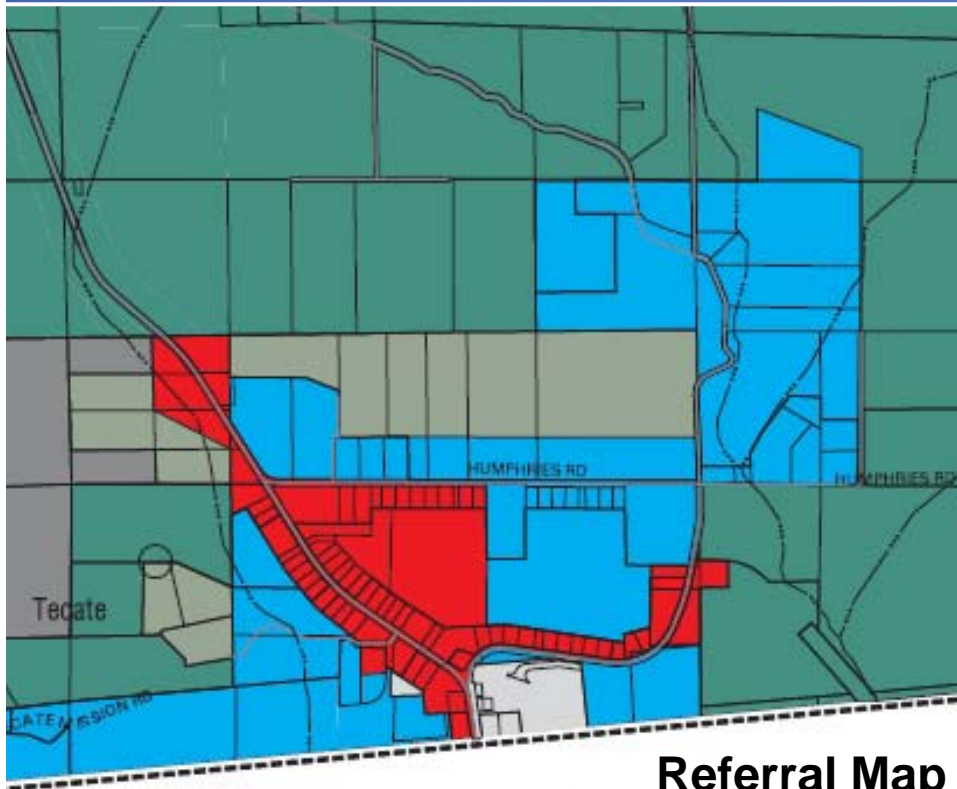


Tecate

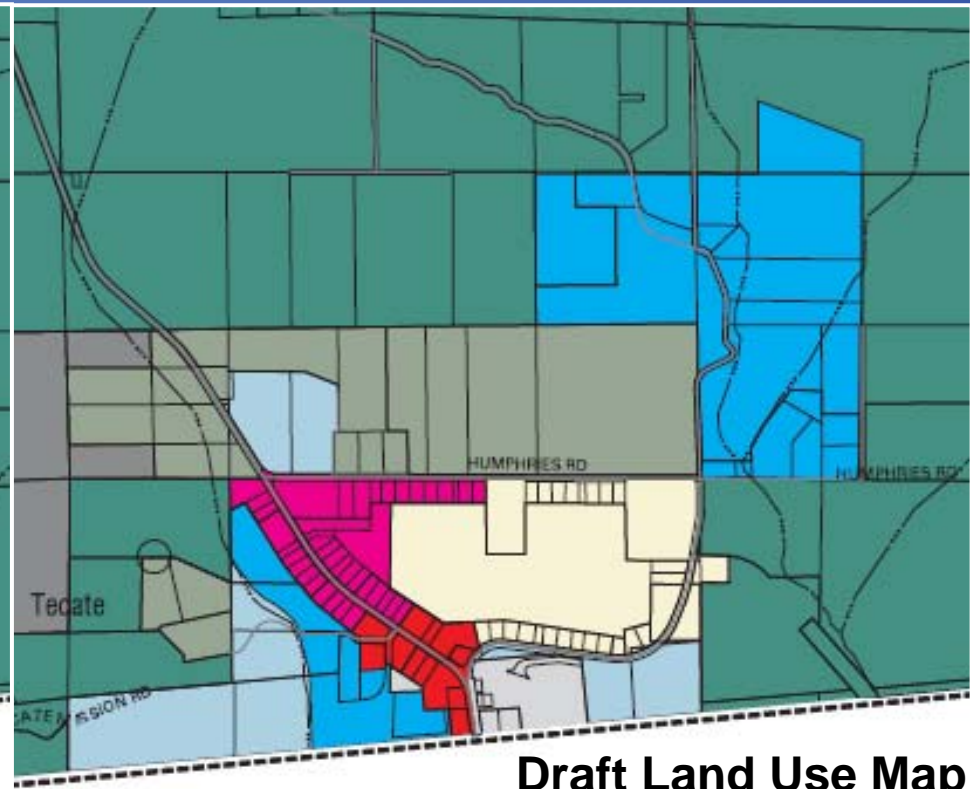
Issue: Unresolved Land Use Plan

Special Study Area in the Community Plan

- **Comprehensive Land Use Plan**
- **Trip generation ceiling to maintain two-lane SR-94**



Referral Map



Draft Land Use Map

Mountain Empire



Preliminary Staff Recommendations:

- ***Deviations from Referral Map: 7***
 - ***Limited Controversy: 6***
 - ***Elevated Controversy: 1***

Mountain Empire Draft Referral Map (With Labels)

Legend

- County Water Authority Boundary
- Areas of Difference
- Forest Conservation Initiative
- Lakes and Reservoirs
- Land Use Designations***
- VILLAGE RESIDENTIAL (VR-30)
- VILLAGE RESIDENTIAL (VR-24)
- VILLAGE RESIDENTIAL (VR-20)
- VILLAGE RESIDENTIAL (VR-15)
- VILLAGE RESIDENTIAL (VR-10.B)
- VILLAGE RESIDENTIAL (VR-7.3)
- VILLAGE RESIDENTIAL (VR-4.3)
- VILLAGE RESIDENTIAL (VR-2.9)
- VILLAGE RESIDENTIAL (VR-2)
- SEMI-RURAL RESIDENTIAL (SR-1)
- SEMI-RURAL RESIDENTIAL (SR-2)
- SEMI-RURAL RESIDENTIAL (SR-4)
- SEMI-RURAL RESIDENTIAL (SR-10)
- RURAL LANDS (RL-20)
- RURAL LANDS (RL-40)
- RURAL LANDS (RL-60)
- RURAL LANDS (RL-160)
- SPECIFIC PLAN AREA
- OFFICE PROFESSIONAL
- NEIGHBORHOOD COMMERCIAL
- GENERAL COMMERCIAL
- RURAL COMMERCIAL
- LIMITED IMPACT INDUSTRIAL
- MEDIUM IMPACT INDUSTRIAL
- HIGH IMPACT INDUSTRIAL
- VILLAGE CORE MIXED USE
- PUBLIC/SEMI-PUBLIC LANDS
- NATIONAL FOREST AND STATE PARKS
- TRIBAL LANDS
- OPEN SPACE (RECREATION)
- OPEN SPACE (CONSERVATION)
- MILITARY INSTALLATIONS
- Jurisdictional Boundary

DATED INFORMATION
Information contained on this map has been or is in the process of being modified and is subject to change.

Current as of November 1, 2009
 CW 2

1:58,877

0 0.35 0.7 1.4
Miles



THIS MAP/DATA IS PROVIDED WITHOUT WARRANTY OF ANY KIND, EITHER EXPRESS OR IMPLIED, INCLUDING BUT NOT LIMITED TO, THE IMPLIED WARRANTIES OF MERCHANTABILITY AND FITNESS FOR A PARTICULAR PURPOSE. This product may contain information from the SANDAG Regional Information System which cannot be reproduced without the written permission of SANDAG. This product may contain information reproduced with permission granted to Rand McNally & Company by SanGIS. This map is copyrighted by Rand McNally & Company. It is intended to copy or reproduce all or any part thereof, whether in printed or electronic form, without the prior written permission of Rand McNally & Company. All Rights Reserved. Full text of the legal notice can be found at: http://www.sandag.org/epa_notice.html



Mountain Empire



Potrero

Recommend Environmentally Superior Map

- ***Community Preference***
- ***Protect Natural Resources***
- ***Commercial Supports Population***

Community Notified

Mountain Empire



Potrero

Dahlgren
Property

344 Ac total

Referral:

RL-20: 120 ac

RL-40: 224 ac

Recommend

RL-40: 344 ac

