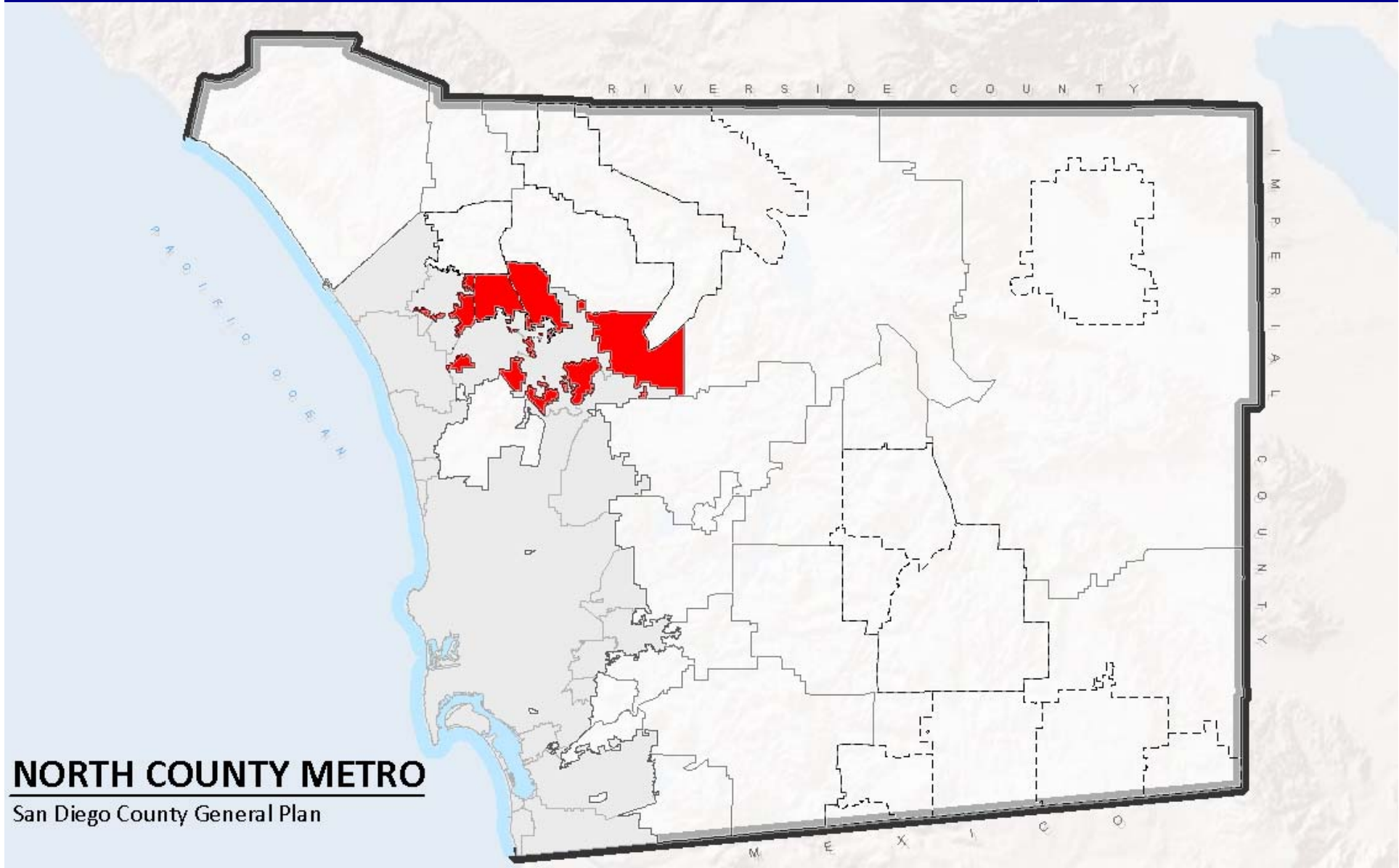


North County Metro.



NORTH COUNTY METRO

San Diego County General Plan

North County Metro.



North County Metro.



Hidden Meadows



North County Metro.



Twin Oaks



North County Metro



Preliminary Staff Recommendations:

- ***Deviations from Referral Map: 14***
 - ***Limited Controversy: 9***
 - ***Elevated Controversy: 5***
 - ***4 Disagreements with the Sponsor Group***

North County Metro Draft Referral Map (With Labels)

Legend

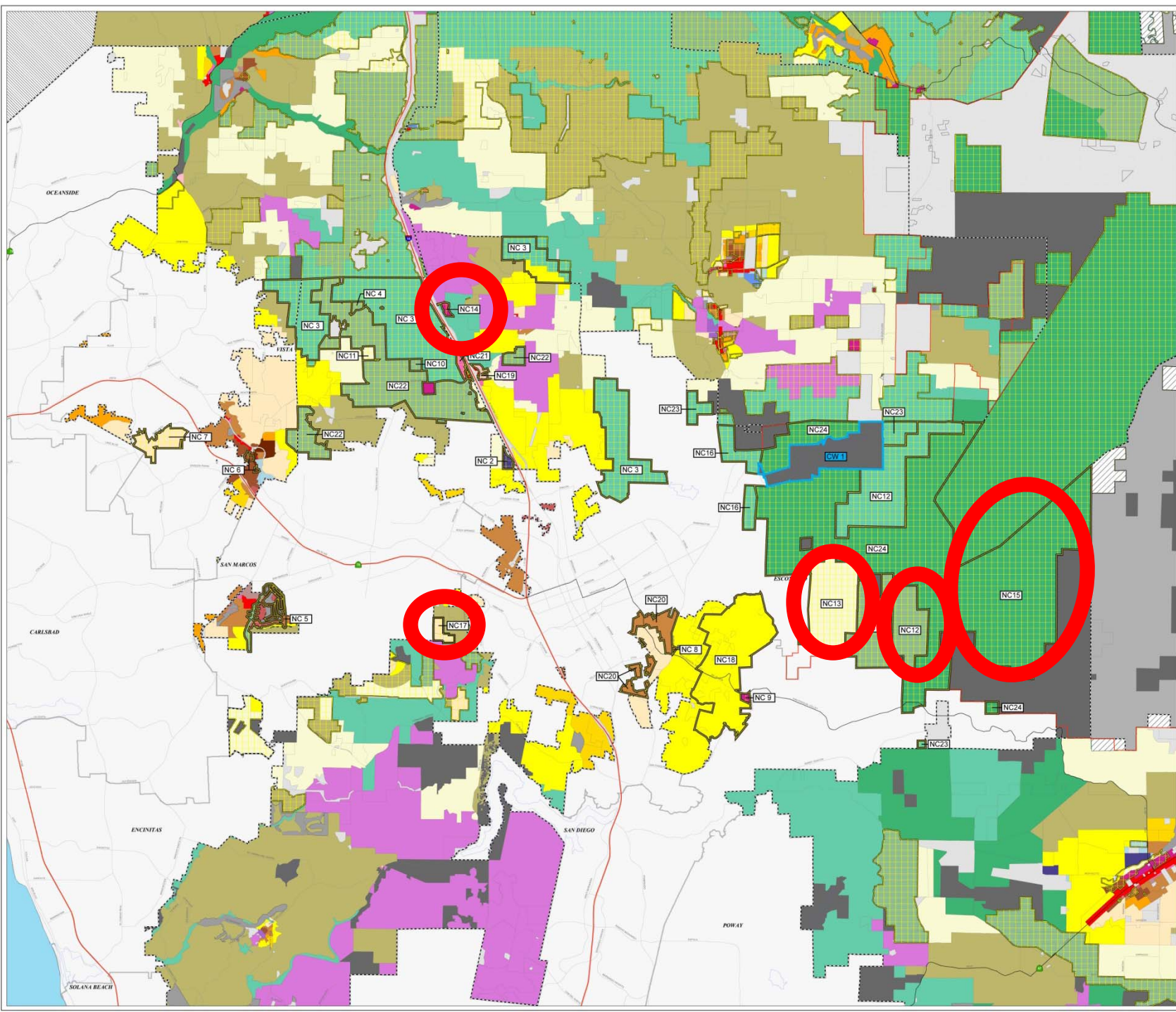
- County Water Authority Boundary
- Areas of Difference
- Forest Conservation Initiative
- Lakes and Reservoirs
- Land Use Designations***
- VILLAGE RESIDENTIAL (VR-30)
- VILLAGE RESIDENTIAL (VR-24)
- VILLAGE RESIDENTIAL (VR-20)
- VILLAGE RESIDENTIAL (VR-15)
- VILLAGE RESIDENTIAL (VR-10-9)
- VILLAGE RESIDENTIAL (VR-7-3)
- VILLAGE RESIDENTIAL (VR-4-3)
- VILLAGE RESIDENTIAL (VR-2-9)
- VILLAGE RESIDENTIAL (VR-2)
- SEMI-RURAL RESIDENTIAL (SR-1)
- SEMI-RURAL RESIDENTIAL (SR-2)
- SEMI-RURAL RESIDENTIAL (SR-4)
- SEMI-RURAL RESIDENTIAL (SR-10)
- RURAL LANDS (RL-20)
- RURAL LANDS (RL-40)
- RURAL LANDS (RL-80)
- RURAL LANDS (RL-160)
- SPECIFIC PLAN AREA
- OFFICE PROFESSIONAL
- NEIGHBORHOOD COMMERCIAL
- GENERAL COMMERCIAL
- RURAL COMMERCIAL
- LIMITED IMPACT INDUSTRIAL
- MEDIUM IMPACT INDUSTRIAL
- HIGH IMPACT INDUSTRIAL
- VILLAGE CORE MIXED USE
- PUBLIC/SEMI-PUBLIC LANDS
- NATIONAL FOREST AND STATE PARKS
- TRIBAL LANDS
- OPEN SPACE (RECREATION)
- OPEN SPACE (CONSERVATION)
- MILITARY INSTALLATIONS
- Jurisdictional Boundary

DATED INFORMATION
Information contained on this map has been or is in the process of being modified and is subject to change.
Current as of November 1, 2009

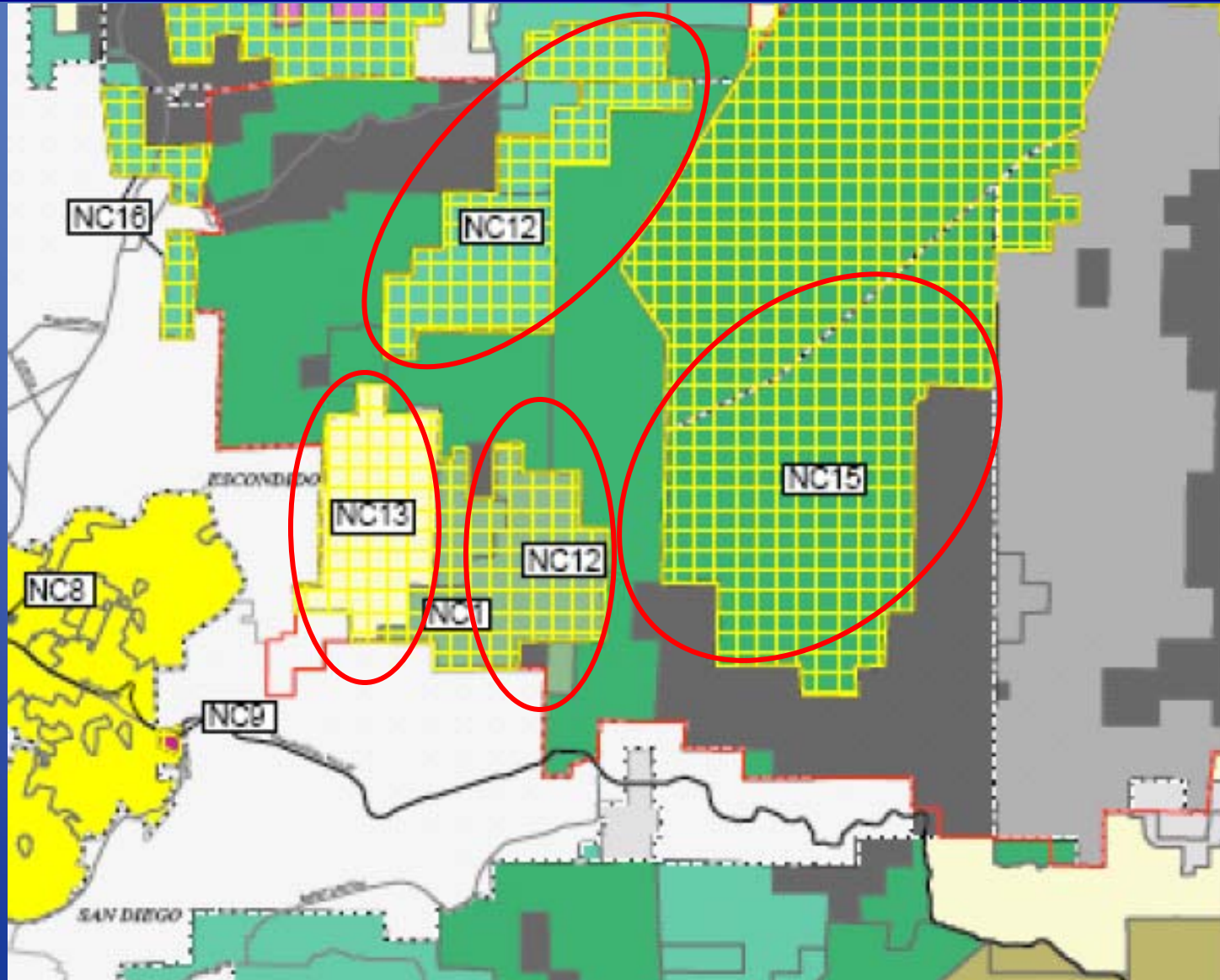
1:39,694



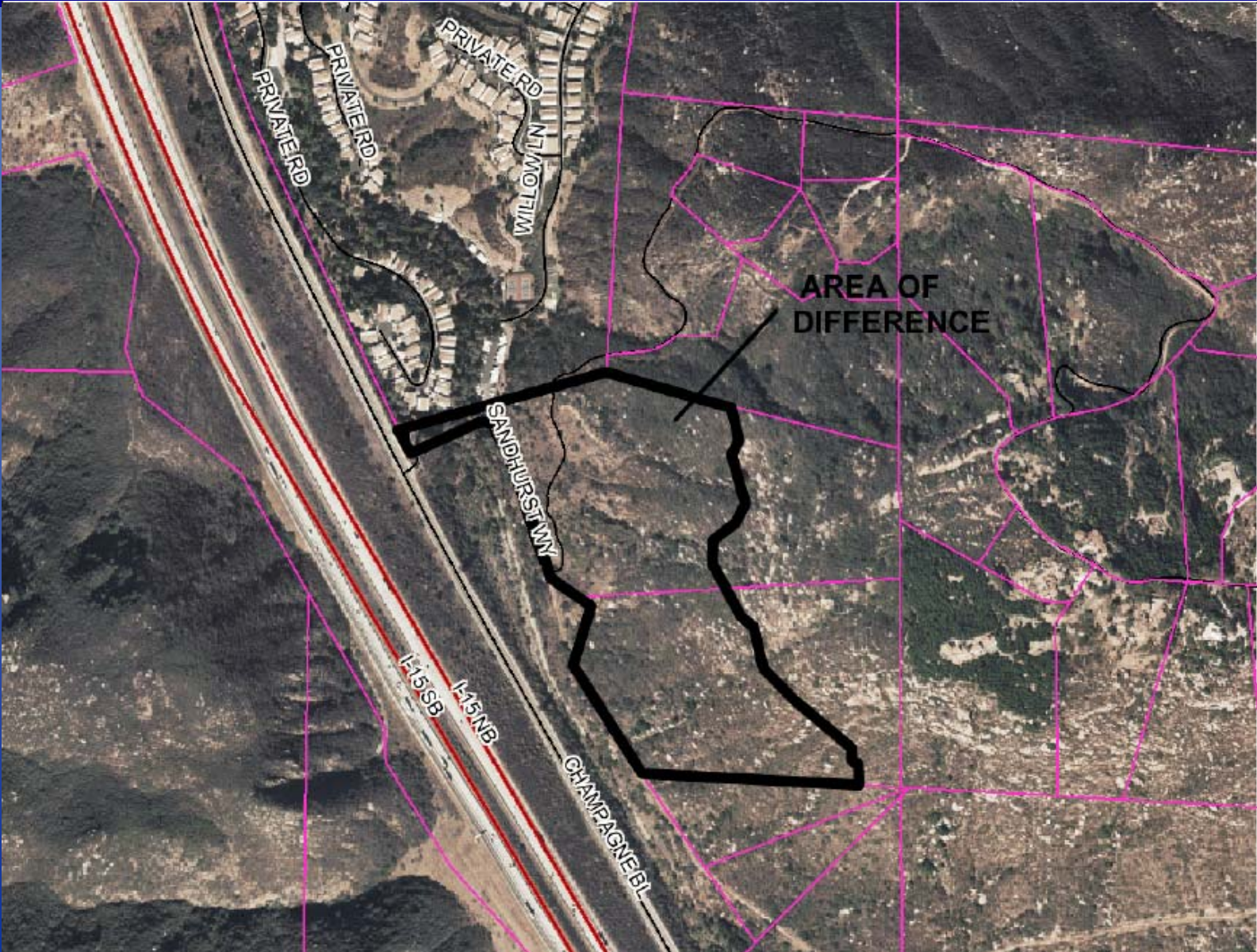
THIS MAP/DATA IS PROVIDED WITHOUT WARRANTY OF ANY KIND, EITHER EXPRESSED OR IMPLIED, INCLUDING BUT NOT LIMITED TO, THE IMPLIED WARRANTIES OF MERCHANTABILITY AND FITNESS FOR A PARTICULAR PURPOSE. Also, this product may contain information reproduced with permission from the County of San Diego. This information is provided as a service to the public and is not intended to be used for any other purpose. All rights reserved. Copyright 2009 by the County of San Diego. All rights reserved. Full text of this legal notice can be found at: http://www.sandiego.gov/legaffairs/



North County Metro [NC12, NC13, NC15]



North County Metro [NC14] AERIAL



North County Metro [NC17] AERIAL

