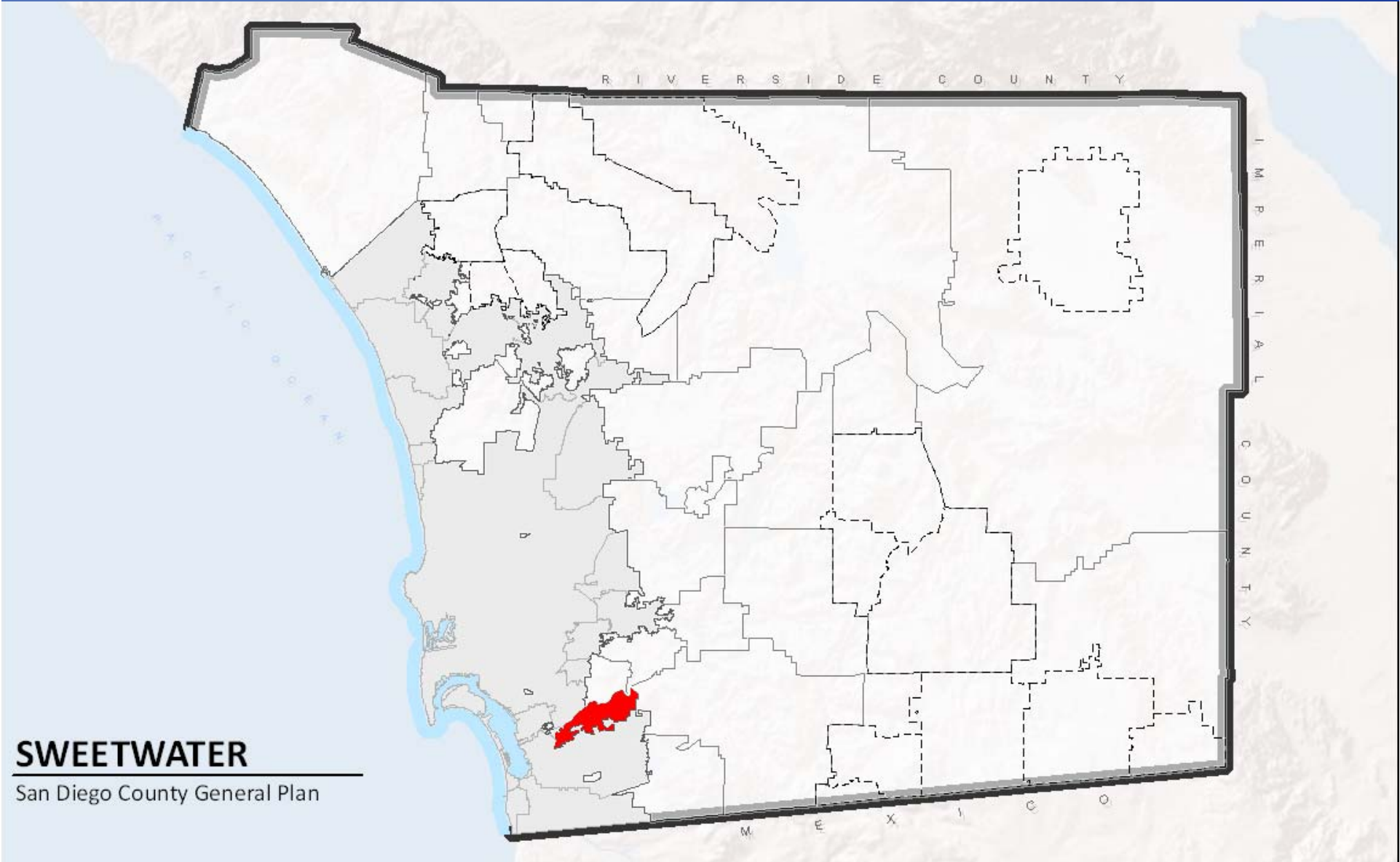


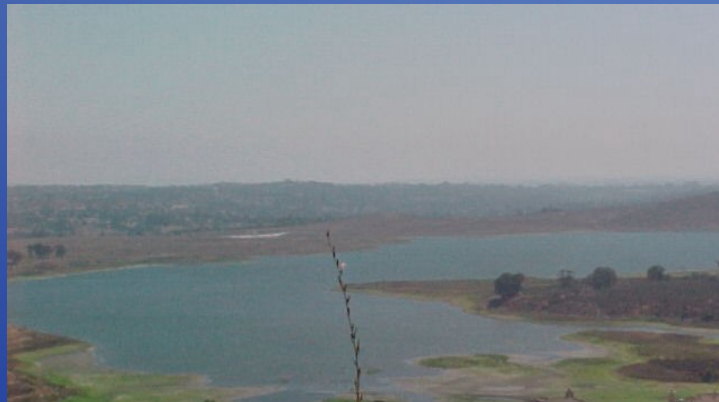
# Sweetwater



## **SWEETWATER**

San Diego County General Plan

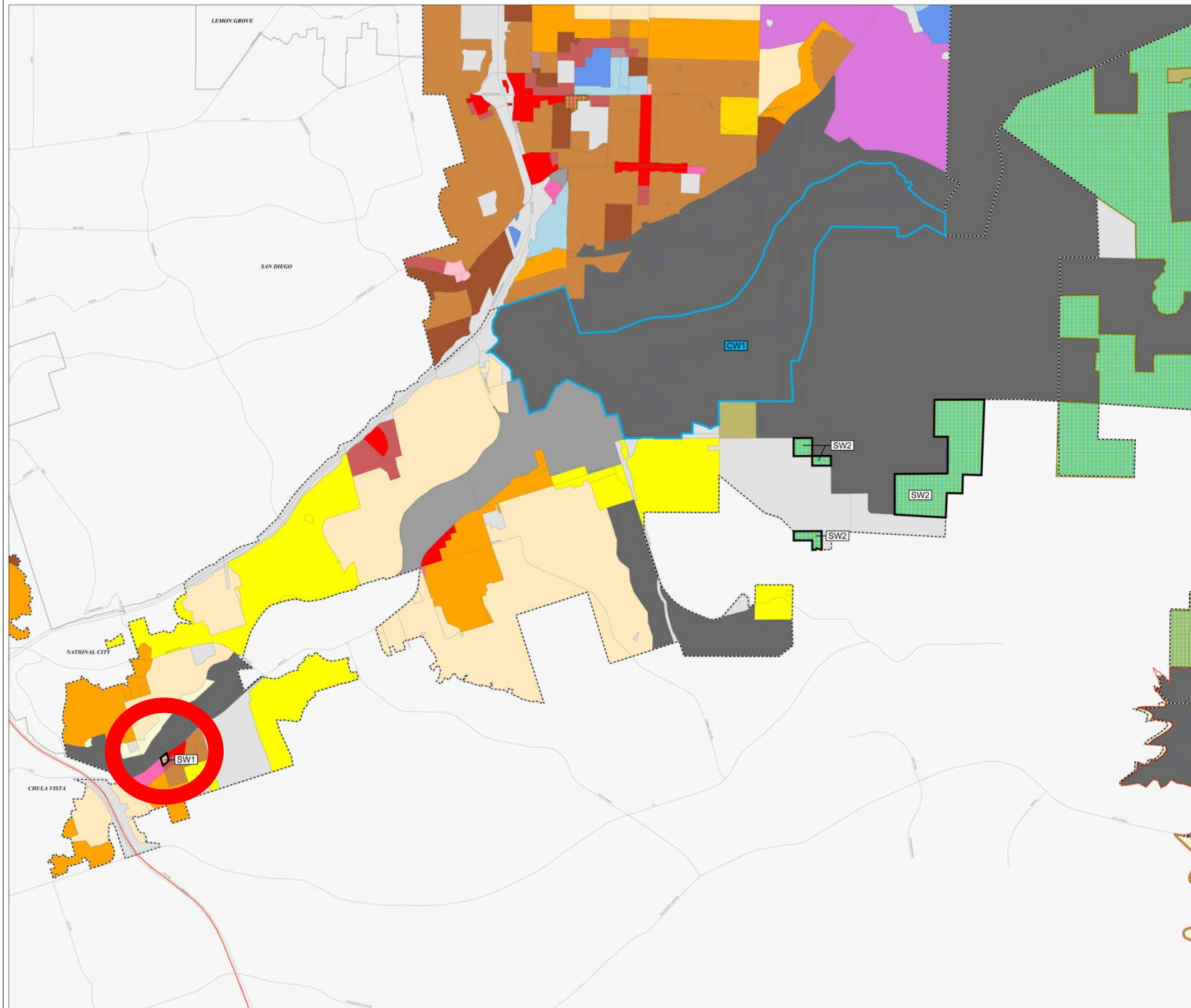
# Sweetwater



## Preliminary Staff Recommendations:

- ***Deviations from Referral Map: 1***
  - ***Limited Controversy: 0***
  - ***Elevated Controversy: 1***

# Sweetwater Draft Referral Map (With Labels)



- Legend**
- County Water Authority Boundary
  - Areas of Difference
  - Forest Conservation Initiative
  - Lakes and Reservoirs
- Land Use Designations\***
- VILLAGE RESIDENTIAL (VR-30)
  - VILLAGE RESIDENTIAL (VR-24)
  - VILLAGE RESIDENTIAL (VR-20)
  - VILLAGE RESIDENTIAL (VR-15)
  - VILLAGE RESIDENTIAL (VR-10.9)
  - VILLAGE RESIDENTIAL (VR-7.3)
  - VILLAGE RESIDENTIAL (VR-4.3)
  - VILLAGE RESIDENTIAL (VR-2.9)
  - VILLAGE RESIDENTIAL (VR-2)
  - SEM-RURAL RESIDENTIAL (SR-1)
  - SEM-RURAL RESIDENTIAL (SR-2)
  - SEM-RURAL RESIDENTIAL (SR-4)
  - SEM-RURAL RESIDENTIAL (SR-10)
  - RURAL LANDS (RL-25)
  - RURAL LANDS (RL-45)
  - RURAL LANDS (RL-80)
  - RURAL LANDS (RL-150)
  - SPECIFIC PLAN AREA
  - OFFICE PROFESSIONAL
  - NEIGHBORHOOD COMMERCIAL
  - GENERAL COMMERCIAL
  - RURAL COMMERCIAL
  - LIMITED IMPACT INDUSTRIAL
  - MEDIUM IMPACT INDUSTRIAL
  - HIGH IMPACT INDUSTRIAL
  - VILLAGE CORE MIXED USE
  - PUBLIC/SEM-PUBLIC LANDS
  - NATIONAL FOREST AND STATE PARKS
  - TRIBAL LANDS
  - OPEN SPACE (RECREATION)
  - OPEN SPACE (CONSERVATION)
  - MILITARY INSTALLATIONS
  - Jurisdictional Boundary

**DATED INFORMATION**  
Information contained on this map has been or is in the process of being modified and is subject to change.  
Current as of November 1, 2009

1:12,403



THIS MAP/DATA IS PROVIDED WITHOUT WARRANTY OF ANY KIND, EITHER EXPRESSED OR IMPLIED, INCLUDING BUT NOT LIMITED TO: THE IMPLIED WARRANTIES OF MERCHANTABILITY AND FITNESS FOR A PARTICULAR PURPOSE. Note: The provided map contains information from the SANDAG Regional Information System which cannot be reproduced without the written permission of SANDAG. This product may contain information reproduced with permission from the City of San Diego, the County of San Diego, the State of California, and the United States Department of Defense. It is unlawful to copy or reproduce all or any part thereof, whether for personal use or resale, without the prior written permission of Rand McNally & Company. Copyright © 2009. All Rights Reserved. Full text of this legal notice can be found at: [http://www.sandag.org/Legal\\_Notice.htm](http://www.sandag.org/Legal_Notice.htm)

# Sweetwater [SW1] AERIAL



# Sweetwater



**Follow up item : CPG requested commercial change**

