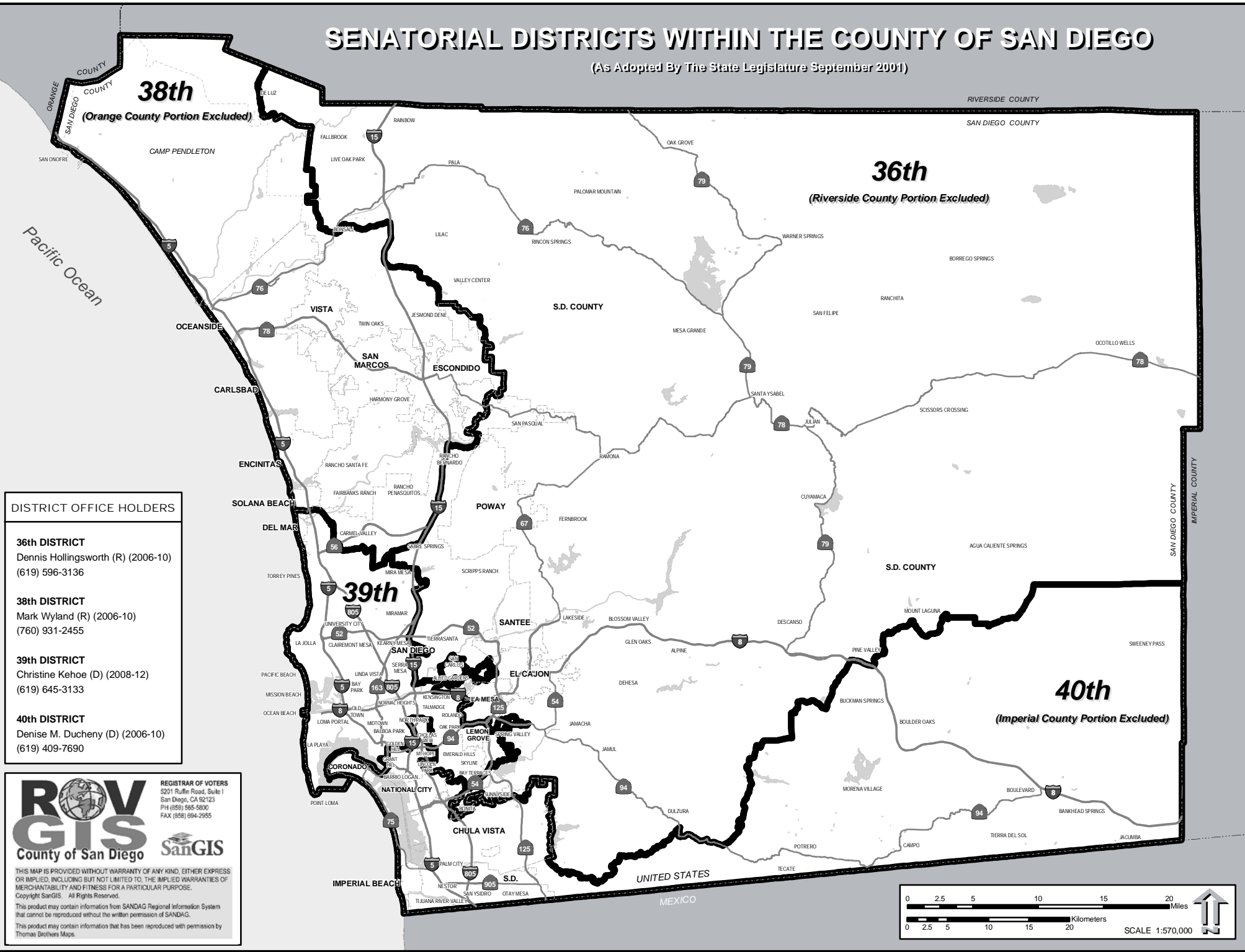


SENATORIAL DISTRICTS WITHIN THE COUNTY OF SAN DIEGO

(As Adopted By The State Legislature September 2001)



DISTRICT OFFICE HOLDERS

- 36th DISTRICT**
Dennis Hollingsworth (R) (2006-10)
(619) 596-3136

- 38th DISTRICT**
Mark Wyland (R) (2006-10)
(760) 931-2455

- 39th DISTRICT**
Christine Kehoe (D) (2008-12)
(619) 645-3133

- 40th DISTRICT**
Denise M. Ducheny (D) (2006-10)
(619) 409-7690

REGISTRAR OF VOTERS
5201 Ruffin Road, Suite 1
San Diego, CA 92123
PH (619) 595-5800
FAX (619) 694-2955

SanGIS
County of San Diego

THIS MAP IS PROVIDED WITHOUT WARRANTY OF ANY KIND, EITHER EXPRESS OR IMPLIED, INCLUDING BUT NOT LIMITED TO, THE IMPLIED WARRANTIES OF MERCHANTABILITY AND FITNESS FOR A PARTICULAR PURPOSE. Copyright SanGIS. All Rights Reserved.

This product may contain information from SANDAG Regional Information System that cannot be reproduced without the written permission of SANDAG.

This product may contain information that has been reproduced with permission by Thomas Brothers Maps.

